



Hema Nagpal^{1*}, PK Sharma², Jyoti Chopra³ and Rajni Patel⁴

¹Assistant professor, Department of Anatomy, SIMS,Hapur, UP, India

²Professor and Head, Department of Anatomy, ERA Medical College, Lucknow, UP, India

³Professor, Department of Anatomy, King George's Medical University, Lucknow, UP, India

⁴Associate professor, dept of anatomy, SIMS, HAPUR, UP, India

Received: 19 July, 2018

Accepted: 31 July, 2018

Published: 01 August, 2018

***Corresponding author:** Hema Nagpal, Assistant professor, Department of Anatomy, SIMS, Hapur, UP, India, E-mail: hemanagpal30@gmail.com

Keywords: Aortic Arch; Morphometry; Computed tomography

<https://www.peertechz.com>

Research Article

Aortic Arch Morphometry and its clinical implication –A computed tomography study

Abstract

Aortic arch is a challenging site for endovascular repair. In the present study morphometric details of aortic arch such as aortic arch angle, aortic arch type and angle of aortic arch curvature were observed with an objective to provide normogram of these parameters for north indian population as the literature is lacking with these values. These parameters were corelated with age and gender also. It is a pilot study of its own kind.

Introduction

Aorta is the main arterial trunk that delivers oxygenated blood from the left ventricle of the heart to the tissues of the body. The major branches of arch of aorta are the great ways for blood supply to the head and upper limb, and are of particular interest in clinical angiography. The most common branching pattern of the aortic arch in humans comprises of three great vessels; first, the brachiocephalic trunk then the left common carotid artery and finally the left subclavian artery. The aortic arch and its branches is important anatomical structure for both surgeons and interventionalists. Aneurysms and dissections of the aortic arch need to be treated with complex surgical procedures such as deep hypothermic circulatory arrest and selective antegrade cerebral perfusion. These procedures evolved to enable replacement of the aortic arch and reconstruction of its continuity to the aorta with less risk of ischemic and embolic cerebral damage. For this the knowledge of morphometric data of the aortic arch can be of help for conceiving, designing and optimizing all types of diagnostic and therapeutic interventions involving the aortic arch and its branches.

Materials and Methods

The present study was conducted on 55 patients, including 31 males and 24 females. The patients underwent computed tomographic angiographic scan for various indications, were included in the study. Age of subjects ranged from 3 months to 75 years across 5 age groups. Written informed consent

from the patients was obtained. The images of patients with previous history of allergy to contrast agent, renal insufficiency, distortion of anatomy of arch of aorta due to any pathology were excluded from this study. A region of interest was drawn on the aorta at the level of the diaphragm. After an appropriate delay to allow passage of the contrast agent into the renal arterial circulation, a series of thin cuts (0.9mm) were obtained throughout the aorta. Morphometry of arch of aorta were studied in axial, multiplanar reconstructions (MPR) images, and in volume rendered images.

The parameters observed were:

1. Aortic arch angle- It was defined as the angle between a line connecting the highest point of the aortic arch and a mid-luminal point of the ascending and descending aorta at the height of the bifurcation of the pulmonary trunk in the parasagittal plane [1] (Figure 1).

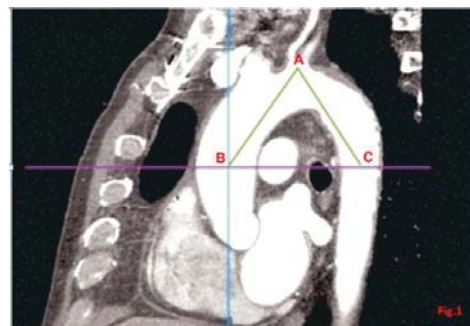


Figure 1: Parasagittal MPR showing measurement of aortic arch angle .a= highest point of the aortic arch,b and c- mid-luminal point of the ascending and descending aorta at the height of the bifurcation of the pulmonary trunk.

2. Aortic arch type- There was three types of arches, type I, II and III in which the vertical distance from the origin of the brachiocephalic trunk (BCT) to the top of the arch in parasagittal image was measured, if this distance was less than the diameter of LCA it was termed Type I arch, if the distance was less than double of diameter of LCA but more than its diameter this was labelled as Type II; and if the distance was more than the double of diameter of LCA it was termed Type III arch [2] (Figure 2).
3. Angle of aortic arch curvature-It was the angle formed by aortic arch from coronal plane in axial view (Figure 3).

Results

Age of subjects ranged from 3 months to 75 years across 5 age groups. Except for age groups 0-15 and 61-75 years, all the three age groups had 13 (23.64%) subjects each. In age group 0-15 years there were 10 (18.18%) and in age group 61-75 years, there were 6 (10.91%) cases. Mean age of subjects was 36.4 ± 19.2 years. The study population consisted of 24 (43.64%) females and 31 (56.36%) males. The efforts were made to include sufficient number of subjects from each age group, Aortic arch angle were measured in parasagittal images with the help of electronic caliper. It ranged from 46.4° to 85.5° with a mean value of $65.8^\circ \pm 9.4^\circ$. The most common range of angle observed in the study population was $60^\circ - 70^\circ$ in 47.27% (n=52) cases.

Among different age groups, the mean was found to be minimum in age group 15-30yrs ($63.4 \pm 9.1^\circ$) and maximum in Groups 0-15 yrs and 46-60yrs ($68.1 \pm 11.0^\circ$ and $68.1 \pm 9.6^\circ$), however, the difference in different age groups was random in nature and did not account for any significant difference statistically ($p=0.592$). Females had higher mean value as compared to males yet the difference was not significant statistically. As age and gender wise differences were not significant, hence the normative range ($63.3^\circ - 68.3^\circ$) for entire sample could be proposed as representative of all age and gender groups (Table 1,2, Figure 4) .

Type of aortic arch could be categorized in 38 subjects as the subjects having common trunk for BCT and LCA were excluded. Total 26(68.42%) aortic arches were detected as Type I, 11 (28.95%) as Type II and only 1 (2.63%) aortic arch was categorized as Type III. Except for age group >60 years, where Type II was more common as compared to other types, in all other age groups Type I was the most common type.

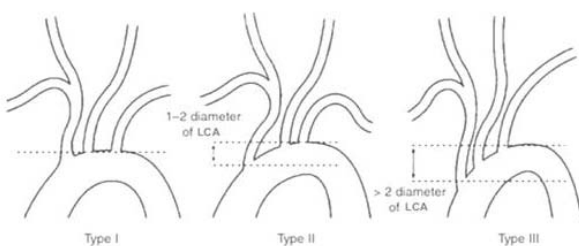


Figure 2: Schematic diagram showing aortic arch types; LCA = left common carotid artery.

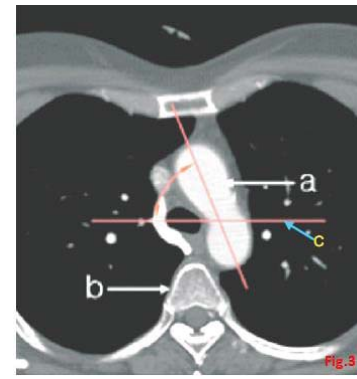


Figure 3: Axial MIP image showing measurement method for the angle of the aortic arch curvature to the coronal plane a : aortic arch, b : vertebral body, c : Coronal plane.

Table 1: Distribution of Subjects according to Age and Gender.

S.No.	Variable	Number	Percentage	
1.	Age (in years)			
	Group I	0-15	10	18.18
	Group II	16-30	13	23.64
	Group III	31-45	13	23.64
	Group IV	46-60	13	23.64
	Group V	61-75	6	10.91

Table 2: Aortic arch angle in different age group and gender.

Variable	n	Range		Mean	SD	95% CI (Normative Range)		Significance of difference
		Min	Max			Lower	Upper	
Overall	55	46.4	85.5	65.8	9.4	63.3	68.3	
Age Groups								
I	10	46.4	85.5	68.1	11.0	61.3	74.9	p=0.592
II	13	48.4	76	63.4	9.1	58.5	68.3	
III	13	47.5	78.6	63.8	9.6	58.5	69.0	
IV	13	48.1	81.6	68.1	9.6	62.9	73.3	
V	6	58.8	72.6	66.7	6.1	61.8	71.6	
Gender								
Male	24	48.7	79.9	66.1	8.2	62.8	69.3	p=0.864
Female	31	46.4	85.5	65.6	10.3	62.0	69.3	

Statistically there was no significant difference in type of aortic arch in different age groups and gender ($p>0.05$) (Table 3, Figure 5).

Angle of aortic arch curvature to the coronal plane was studied in 55 subjects and it was found to range from 30° to 77.6° with a mean value of $58.1^\circ \pm 8.3^\circ$. Among different age groups, the mean was found to be maximum in age group 61-75yrs ($63.0 \pm 8.8^\circ$) and minimum in age group 0-15yrs ($52.6 \pm 10.4^\circ$), however, the difference in different age groups was random in nature and did not account for a significant difference statistically ($p=0.139$). Gender wise, males had a higher mean value as compared to females yet the difference was not significant statistically ($p=0.338$). As age and gender wise differences were not significant, hence the normative range for entire sample could be proposed as representative of all age and gender groups (Table 4, Figure 6).

Planning for endovascular interventions involving the aortic arch requires a detailed familiarity with arch and supra-aortic branch morphology. The aortic arch poses several challenges in terms of morphology, significant hemodynamic forces, and the presence of supraaortic branches. Thus data on aortic arch morphology are necessary to increase the utility of totally endovascular aortic arch repair and to pave the way for “off-the-shelf” fenestrated/ branched stent-grafts. Lack of knowledge can lead to relatively higher rates of complications

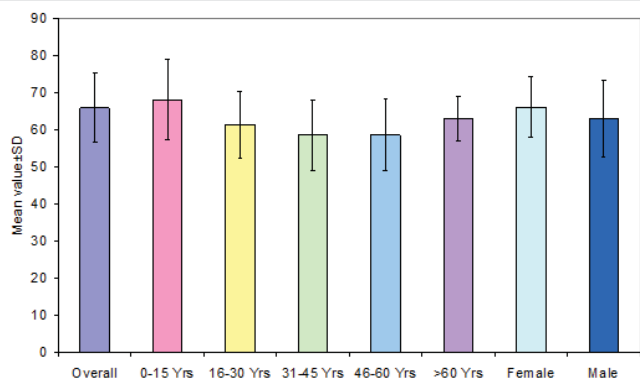


Figure 4: Bar diagram showing distribution of aortic arch angle in different age group and gender.

Table 3: Type of Aortic Arch in various age group and gender.

Variable	Type I (n=26)		Type II (n=11)		Type III (n=1)		Significance of difference
	No.	%	No.	%	No.	%	
Overall	26	68.4	11	28.9	1	2.6	-
Age							
I	5	100.0	0	0.0	0	0.0	$\chi^2 = 10.748$ (df=8); p=0.216
II	6	66.7	3	33.3	0	0.0	
III	5	62.5	3	37.5	0	0.0	
IV	8	80.0	1	10.0	1	10.0	
V	2	33.3	4	66.7	0	0.0	
Gender							
Female	12	70.6	5	29.4	0	0.0	$\chi^2 = 0.833$ (df=2); p=0.659
Male	14	66.7	6	28.6	1	4.8	

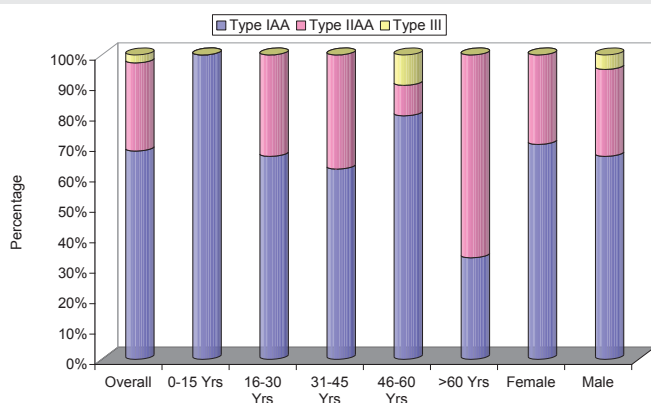


Figure 5: Bar diagram showing aortic arch type (AAT) in different age group and gender.

Table 4: Aortic arch curvature in different age group and gender.

Variable	n	Range		Mean	SD	95% CI (Normative Range)		Significance of difference
		Min	Max			Lower	Upper	
Overall	55	30	77.6	58.1	8.3	55.9	60.3	
Age Groups								
I	10	30	68.5	52.6	10.4	46.1	59.0	'F' = 1.823; p=0.139
II	13	45.4	69.2	59.4	7.1	55.6	63.2	
III	13	39.2	77.6	58.6	9.2	53.6	63.6	
IV	13	52.7	66.8	58.4	4.8	55.8	61.0	
V	6	54.2	74.1	63.0	8.8	55.9	70.0	
Gender								
Female	24	49.8	74.1	59.3	6.1	56.9	61.8	t = 0.966; p=0.338
Male	31	30	77.6	57.2	9.7	53.8	60.6	

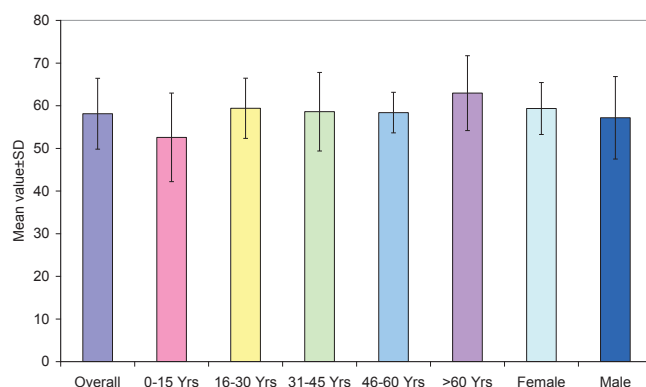


Figure 6: Bar diagram showing Aortic arch curvature in different age group and gender.

and reinterventions following endovascular treatment of aortic arch lesions.

In the present study there was a great difference between the minimal and maximal values of aortic arch angle (46.40° and 85.50°), which points towards a significant variability in steepness of aortic arch. These values are comparable with the result of Demertzis et al. who found it between 43° - 80° [3]. We also studied the effect of age and gender on aortic arch angle and found that it did not show any significant relation with age but in females it was wider than males but this difference was statistically non-significant. Aortic arch angle represents the steepness of aortic arch, so less the angle, more the steepness, resulting into more difficulty in interventional maneuvers for supra-aortic artery.

In the present study, we found type I arch to be more frequently presented (n=26, 68.42%) followed by type II (n=11, 28.95%) and only one (n=1, 2.63%) aortic arch was categorized as Type III. Whereas Demertzis et al. observed Type I aortic arch in 47%, type II in 36% and type III in 17% patients [3]. Liu also found type I arch in 44.7%, type II arch in 31.4%, type III arch in 23.9% of cases [4]. The prevalence of type I arch was quite high and that of type III arch was quite low in present study. In the present study type 1 was the most common type in all age groups except for age group >60 years, where type II was more common. This finding was similar to the finding of

Liu [4]. Although aortic arch type did not show any significant correlation with age and gender ($p > 0.05$) as also observed by Demertzis et al. [3].

The aortic arch type gives an additional impression of steepness of the aortic arch [2]. The type III arch was correlated to the maximum grade of difficulty in interventional maneuvers. We found type I to be most common in our study so there should be minimum difficulty of interventional maneuvers for supra-aortic artery access in our population.

In present study average angle of aortic arch curvature to coronal plane was 58.11° (range, 30° – 78°) which was almost similar to the value observed by Shin et al. (62.2° with a range of 30° – 90°) [5]. Angle was found to be lowest (52.57 ± 10.38 mm) in subjects aged 0–15 years and highest (62.95 – 8.78 mm) in subjects aged 61–75 years, but this difference was statistically non-significant ($p = 0.139$). Mean aortic arch curvature of female subjects was found to be higher (59.34 ± 6.09) as compared to male subjects (57.16 ± 9.66) but this difference was also statistically non-significant ($p = 0.338$).

So this study provides a basic anatomical information to

catheterize aortic arch and its branches for safely performing endovascular surgery.

References

1. Agnoletti G, Ou P, Celermajer DS, Boudjemline Y, Marini D, et al. (2008) Acute angulation of the aortic arch predisposes a patient to ascending aortic dilatation and aortic regurgitation late after the arterial switch operation for transposition of the great arteries. *J Thorac Cardiovasc Surg* 135: 568–572. [Link: https://goo.gl/2ShUJt](https://goo.gl/2ShUJt)
2. Madhwal S, Rajagopal V, Bhatt DL, Bajzer CT, Whitlow P, et al. (2008) Predictors of difficult carotid stenting as determined by aortic arch angiography. *J Invasive Cardiol* 20: 200–204. [Link: https://goo.gl/X1d96D](https://goo.gl/X1d96D)
3. Demertzis S1, Hurni S, Stalder M, Gahl B, Herrmann G (2010) Aortic arch morphometry in living humans. *J Anat* 217: 588–596. [Link: https://goo.gl/i3vbKv](https://goo.gl/i3vbKv)
4. Luis A Yeri Jorge E Gómez (2011) Sergio Fontaneto & Marcia Espósito Variation of the Origin of Aortic Arch Branches: In Relationship with Plates of Atheroma. *Int. J. Morphol* 29: 182–186
5. Shin IY, Chung YG, Shin WH, Im SB, Hwang SC, et al. (2008) A Morphometric Study on Cadaveric Aortic Arch and its branches in 25 Korean Adults: The perspective of Endovascular surgery. *J Korean Neurosurg Soc* 44: 78–83. [Link: https://goo.gl/fkNwqf](https://goo.gl/fkNwqf)

Discover a bigger Impact and Visibility of your article publication with
Peertechz Publications

Highlights

- ◆ Signatory publisher of ORCID
- ◆ Signatory Publisher of DORA (San Francisco Declaration on Research Assessment)
- ◆ Articles archived in world's renowned service providers such as Portico, CNKI, AGRI, TDNet, Base (Bielefeld University Library), CrossRef, Scilit, J-Gate etc.
- ◆ Journals indexed in ICMJE, SHERPA/ROMEO, Google Scholar etc.
- ◆ OAI-PMH (Open Archives Initiative Protocol for Metadata Harvesting)
- ◆ Dedicated Editorial Board for every journal
- ◆ Accurate and rapid peer-review process
- ◆ Increased citations of published articles through promotions
- ◆ Reduced timeline for article publication

Submit your articles and experience a new surge in publication services
(<https://www.peertechz.com/submitnow>).

Peertechz journals wishes evaluating success in your every endeavour.

Copyright: © 2018 Nagpal H, et al. This is an open-access article distributed under the terms of the Creative Commons Attribution License, which permits unrestricted use, distribution, and reproduction in any medium, provided the original author and source are credited.