

Case Series

Myocarditis in arrhythmogenic right ventricular dysplasia. A casual finding or a part of the disease pathophysiology?

Ana Margarida Barrigó Fernandes Bernardo^{1*}, Ana Rita Santos², Bruno Piçarra², João Pais², Mafalda Carrington² and José Aguiar²

¹Department of Medicine 2, Hospital Espírito Santo de Évora, Faculty of Medicine, University of Lisbon, Portugal

²Department of Cardiology, Hospital Espírito Santo de Évora, Portugal

Received: 07 January, 2020
Accepted: 13 February, 2020
Published: 14 February, 2020

*Corresponding author: Ana Margarida Barrigó Fernandes Bernardo, MD, Department of Medicine 2, Hospital Espírito Santo de Évora, Faculty of Medicine, University of Lisbon, Portugal, Tel: +351961339791; E-mail: ana.mfbernardo@gmail.com

ORCID: <https://orcid.org/0000-0002-4458-789X>

<https://www.peertechz.com>



Myocarditis in Arrhythmogenic Right Ventricular Dysplasia (ARVD) is characterized massive inflammatory cell infiltrates founded after acute myocardial necrosis in the early stages of the disease. This inflammatory response didn't mean necessarily an infective process and could lead to changes in phenotype and to an abrupt progression of the disease.

Arrhythmogenic dysplasia of the right ventricle is the most frequent in young individuals and may have different clinical presentations: From asymptomatic condition to sudden death. Its diagnosis is based on well-defined clinical and imaging criteria in 2010 "Diagnosis of arrhythmogenic right ventricular cardiomyopathy dysplasia: Proposed modification of the Task Force criteria".

The major Cardiac Magnetic Resonance (CMR) criteria for ARVD are:

Regional right ventricle akinesia on dyskinesia or dyssynchronous RV contraction and one of the following:

- Ratio of RV end-diastolic volume to BSA $\geq 110\text{mL}/\text{m}^2$ (male) or $\geq 100\text{mL}/\text{m}^2$ (female); OR
- RV ejection fraction $\leq 40\%$.

The authors present the images of two patients with simultaneously myocarditis and major CMR criteria for ARVD.

Case 1

52 y/o male patient without cardiovascular risk factors that was admitted in the Emergency department (ER) with palpitations and syncope. The Electrocardiogram (EKG) showed a wide-QRS tachycardia with 220 bpm. In the etiologic evaluation, he performed a CMR that revealed a dilated Right Ventricular (RV) high with an end-diastolic volume of 152mL/m² (Figure 1A), RV dysfunction with Ejection Fraction (RVEF) of 27%; regional wall motion abnormalities with dyskinesia of RV infundibulum (Figure 1B) and subepicardial late enhancement in the basal inferolateral segment of the left ventricular (Figure 1C) suggestive of myocarditis.

A genetic test for right ventricular dysplasia was performed, which was negative.

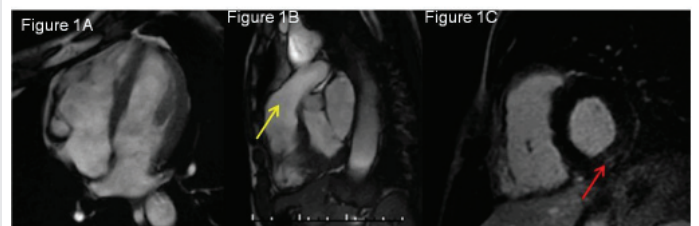


Figure 1: Four-chamber view showing dilated right ventricular high with an end-diastolic volume; Figure 1B - Short-axis view showing dyskinesia of the right ventricular infundibulum (yellow arrow); Figure 1C - Short-axis late enhancement showing subepicardial late enhancement in the basal inferolateral segment of the left ventricle (red arrow).

Case 2

39 y/o female patient with dyslipidemia admitted with chest pain and dyspnea. The electrocardiogram showed sinus rhythm and negative T waves in leads V1-V4. The coronary angiography showed normal coronaries. A CMR was performed and revealed a high normal RV volume with an end-diastolic volume of 93mL/m², RV dysfunction with Ejection Fraction (RVEF) of 30%; small aneurysms in the RV outflow tract (Figure 2A) and subepicardial late enhancement in the apical inferior segment of the left ventricular (Figure 2B) suggestive of myocarditis.

A genetic test for right ventricular dysplasia was performed, which was negative.

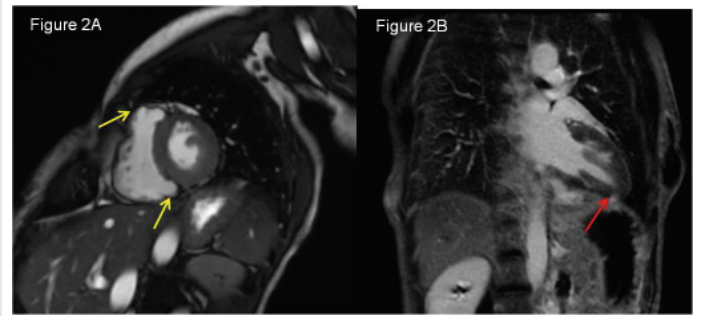


Figure 2: Short-axis view showing small aneurysms of the right ventricle (yellow arrow); Figure 2B - Two-chamber view of late enhancement showing subepicardial late enhancement in the apical inferior segment of the left ventricle (red arrow).

Discover a bigger Impact and Visibility of your article publication with Peertechz Publications

Highlights

- ❖ Signatory publisher of ORCID
- ❖ Signatory Publisher of DORA (San Francisco Declaration on Research Assessment)
- ❖ Articles archived in worlds' renowned service providers such as Portico, CNKI, AGRIS, TDNet, Base (Bielefeld University Library), CrossRef, Scilit, J-Gate etc.
- ❖ Journals indexed in ICMJE, SHERPA/ROMEO, Google Scholar etc.
- ❖ OAI-PMH (Open Archives Initiative Protocol for Metadata Harvesting)
- ❖ Dedicated Editorial Board for every journal
- ❖ Accurate and rapid peer-review process
- ❖ Increased citations of published articles through promotions
- ❖ Reduced timeline for article publication

Submit your articles and experience a new surge in publication services (<https://www.peertechz.com/submission>).

Peertechz journals wishes everlasting success in your every endeavours.

Copyright: © 2020 Fernandes Bernardo AMB, et al. This is an open-access article distributed under the terms of the Creative Commons Attribution License, which permits unrestricted use, distribution, and reproduction in any medium, provided the original author and source are credited.