

## Short Communication

# Strange structured elements in consumer's honey

Ortrud Monika Barth\*

Department of Geology, Federal University of Rio de Janeiro, 20940, Brazil

**Received:** 14 December, 2022

**Accepted:** 23 December, 2022

**Published:** 24 December, 2022

\***Corresponding author:** Dr. Ortrud Monika Barth, Professor, Department of Geology, Federal University of Rio de Janeiro, 20940, Brazil, Tel: 55 21 99996 4972; E-mail: barth@ioc.fiocruz.br; monikabarth@gmail.com

**ORCID:** <https://orcid.org/0000-0002-2418-8605>

**Copyright License:** © 2022 Barth OM. This is an open-access article distributed under the terms of the Creative Commons Attribution License, which permits unrestricted use, distribution, and reproduction in any medium, provided the original author and source are credited.

<https://www.peertechzpublications.com>



## Abstract

In order to obtain a better resolution of honey and bee pollen quality, it is essential to study them in nature, avoiding any chemical treatment. Besides pollen grains, trichomes, vegetable druses, mites, charcoal, fragments of plant tissues, amorphous brownish organic material, starch, finely granulate, dispersed gray vegetal material and oils are frequently detected. These elements interfere with the nutritional value of the products.

Several species of social bees produce honey, a longtime significant sweet ingredient on the human's menu. The honeybee *Apis mellifera* L. was carefully treated in order to provide men with their desired product. In parallel, in the subtropical and tropical regions, the social stingless bees of the Tribu Meliponini, as species of *Melipona*, *Trigona* and *Scaptotrigona* [1], were considered yet by wild exploitation until today. India used bee products, such as honey, propolis and geopropolis, as long as eight thousand years ago [2]. Recently, an intense movement in favor to maintain these bees in captivity, called great interest not only in scientific but mainly of commercial interests now. Several stingless bee beekeeper associations emerged.

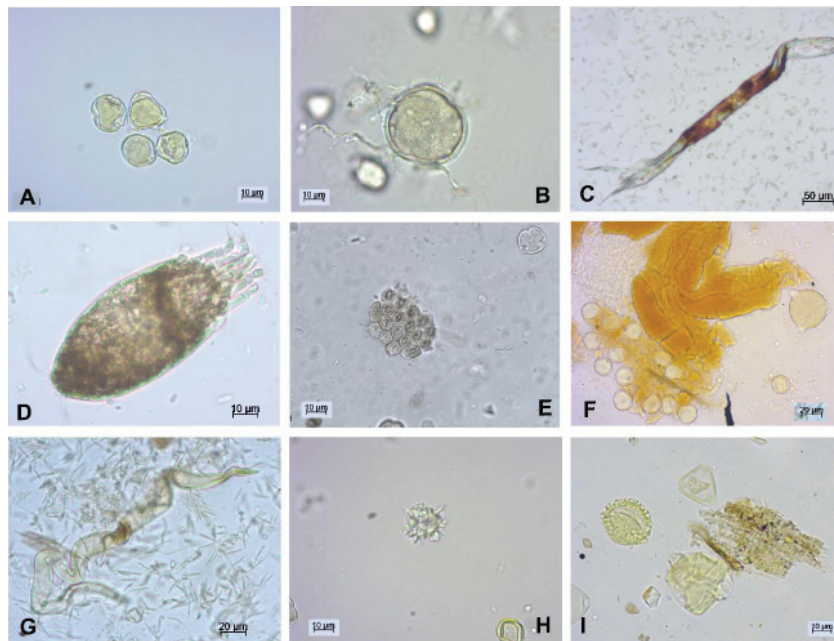
Honey quality is essential to all of us. Elaborated legislations are disposable in several countries. Besides biochemical analyses, pollen grain investigation in bee products (honey, pollen loads, bee bread, propolis, geopropolis, royal jelly) was every time indispensable. Several methodologies were elaborated using pollen grain morphology to understand the plants producing bee products [3].

Autolysis is a standard technique in Palynology. In order to obtain a better resolution of honey' in Melissopalynology studies, it is essential and indispensable to prepare honey

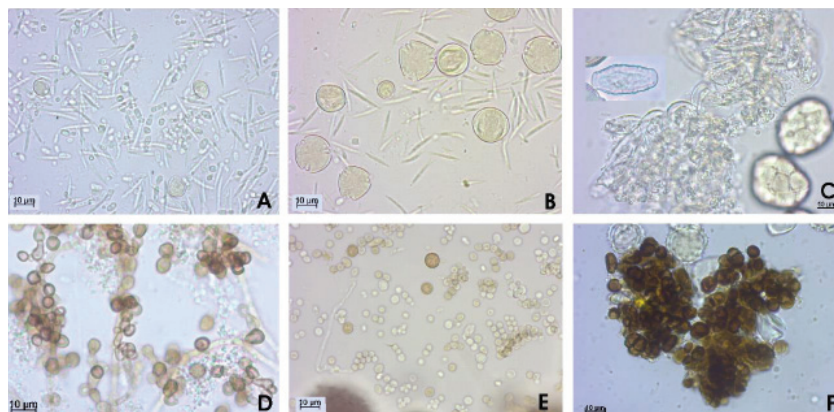
sediments without or before acetolysis administration to honey, bee pollen loads and bee bread, including stingless bee pot-honey and pot-pollen [1,4]. The treatment with acetolysis [5], using acids, from acetic acid plus acetic anhydride and sulfuric acid, causes artificial fossilization of pollen grains, stripping them of their content and making the enveloping membranes better visible. Staining of these sediments is not advised. The natural color of pollen grains that have not yet been chemically processed helps in their identification also. Propolis, geopropolis and royal jelly must be submitted to acetolysis.

After resuspending honey and pollen samples in water and then in glycerinated water, other structured elements then pollen grains are frequently observed. If acetolysis was applied, they would be absent. It is not uncommon to detect brood remains, various types of fungal spores, insect fragments, mites, charcoal, dyes, etc. in the samples (Plates 1,2), everyone participating in our diet.

The sediment of *Apis* honey present frequently fungal spores and hyphae collected directly from plant surfaces. Trichomes, vegetable druses, mites, charcoal, fragments of plant tissues, amorphous brownish organic material, starch, finely granulate and dispersed gray vegetal material and



**Plate 1:** A - Group of three *Alchornea* (Euphorbiaceae) pollen grains and one of *Eucalyptus* in honey sediment. Notice that the cell content is preserved. B - Pollen grain infected with fungus; notice the hyphae. C - Synthetic fiber. D - A mite in a honey sample. E - Group of green algae. F - Larval tissue fragment. G - Phytonematoid. H - A single drusa. I - *Ilex* and *Myrcia* pollen grain, a multicellular trichome, and a plant tissue fragment.



**Plate 2:** A - Little round yeast spores, *Piper* (Piperaceae) pollen grains, and *Fusarium* conidiospores in honey sediment. B - *Alchornea*, one *Piper* pollen grain and *Fusarium* conidiospores. C - Two polyads of *Anadenanthera* (Fabaceae) pollen grains (right side) and a large group of compacted *Erysiphe* (mildew) spores; inset (left side): a single spore of *Erysiphe*. D - Spores and hyphae of a fungus and gray finely granulate vegetal material like a substrate. E - Abundant yeast cells and some fungal spores. F - A large group of *Botryococcus* (Chlorophyceae) algal spores.

oils are frequently detected. Nearly all of them are excluded when using the acetolysis technique. Attention must do when industrial processing residues such as tissue, glass fibers and green, red, or blue dyes occur in the samples.

One or another of these structured elements may occur in stingless bee honey also. Yeast spores in greater or lesser amounts are indicative and characteristic of this honey coming from permissible fermentation. The presence of conidiospores of fungi, by our experience, indicates that *Fusarium* spores (mainly in honey samples) and *Erysiphe* (mainly in pollen samples) are strongly indicative of the lack of sufficient food for bee colonies. With a certain frequency, they are found in areas under reforestation and close to urban areas [6,7].

Honeydew honey, besides a few pollen grains, can present

groups of little green algae, a large diversity of fungal spores and vegetal trichomes. These structured elements are less common in variable proportions in relation to nectar and pollen grains collected. Sometimes they are detected in *Eucalyptus* and *Citrus* mixed honeydew-honeys.

The presence of bacteria in honey indicates bad pastures for the bees, and how close to animal breeding sites has to be avoided.

The vegetation visited by the bees can be emphasized using the acetolysis method for better visualization and identification of the pollen grains in honey and bee pollen samples. It does not provide enough information about the quality of the honey and bee pollen samples.



This short explanation shows that a simple technique of honey and bee pollen preparation brings additional information on the quality of bee products that after strong chemical processing just disappear.

### Funding

Conselho Nacional de Desenvolvimento Científico e Tecnológico (CNPq/Brazil) for providing financial support (Process number 301992/2017-7).

### References

1. Vit P, Pedro SRM, Roubik DW (eds.). Pot-honey: a legacy of stingless bees. Springer, Switzerland, (eBook). 2013.; 654. DOI: 10.1007/978-1-4614-4960-7.
2. Barth OM, Barros MA, Freitas FO. Palynological analysis of geoprotopolis archaeological samples from the Peruaçu river valley, Januária, Minas Gerais, Brazil. Archives of the Natural History Museum and Botanical Garden, Federal University of Minas Gerais, Belo Horizonte, Minas Gerais. 2009; 19: 277-290.
3. Barth OM, Freitas AS, Luz CFP. Usual laboratorial techniques in tropical Melissopalynology. In: Lemos JR (eds.). Ensino, Pesquisa e Inovação em Botânica. Atena Editora, Ponta Grossa, Paraná. (eBook). 2021; 85-98. DOI: 10.22533/at.ed.6602109048
4. Vit P, Pedro SRM, Roubik DW (eds.). Pot-pollen in stingless bee Melittology. Springer, Switzerland, (eBook). 2018.; 481. DOI: 10.1007/978-3-319-61839-5\_8
5. Erdtman G. The acetolysis method - a revised description. Svensk Botanisk Tidskrift. 1960; 54: 561-564.
6. Barth OM, Freitas AS, Rio-Branco CS. Pollen collected by stingless bees in a reforested urban area of Rio de Janeiro city. Bee Word, August 2020; 23-26. DOI: 10.1080/0005772X.2020.1796472.
7. Barth OM, Freitas AS. Stingless bee resources during reforestation of the Atlantic domain of Rio de Janeiro city, Brazil. Journal of Apicultural Research, published online 03 Feb 2022; 1-9. DOI: 10.1080/00218839.2022.2028386.